



## Largest Neutral Hyper Scale Data Center In The Country





## IT ROOM 1 100% Done

- TIER III
- Capacity from 80 to 104 Racks
- Up to 47 RU of Space per Rack
- Up to 17 KVA per Rack
- From 2 to 6 power connections per Rack
- Each connection with 48 C13/C19 sockets
- Double fiber optic connection up to 100 gbps
- Double cross connection to all racks
- UPS power from 4 hours
- Generation Energy up to 10 uninterrupted days
- 1.7 Million BTU of air conditioning per room, Redundancy 2 N + 1



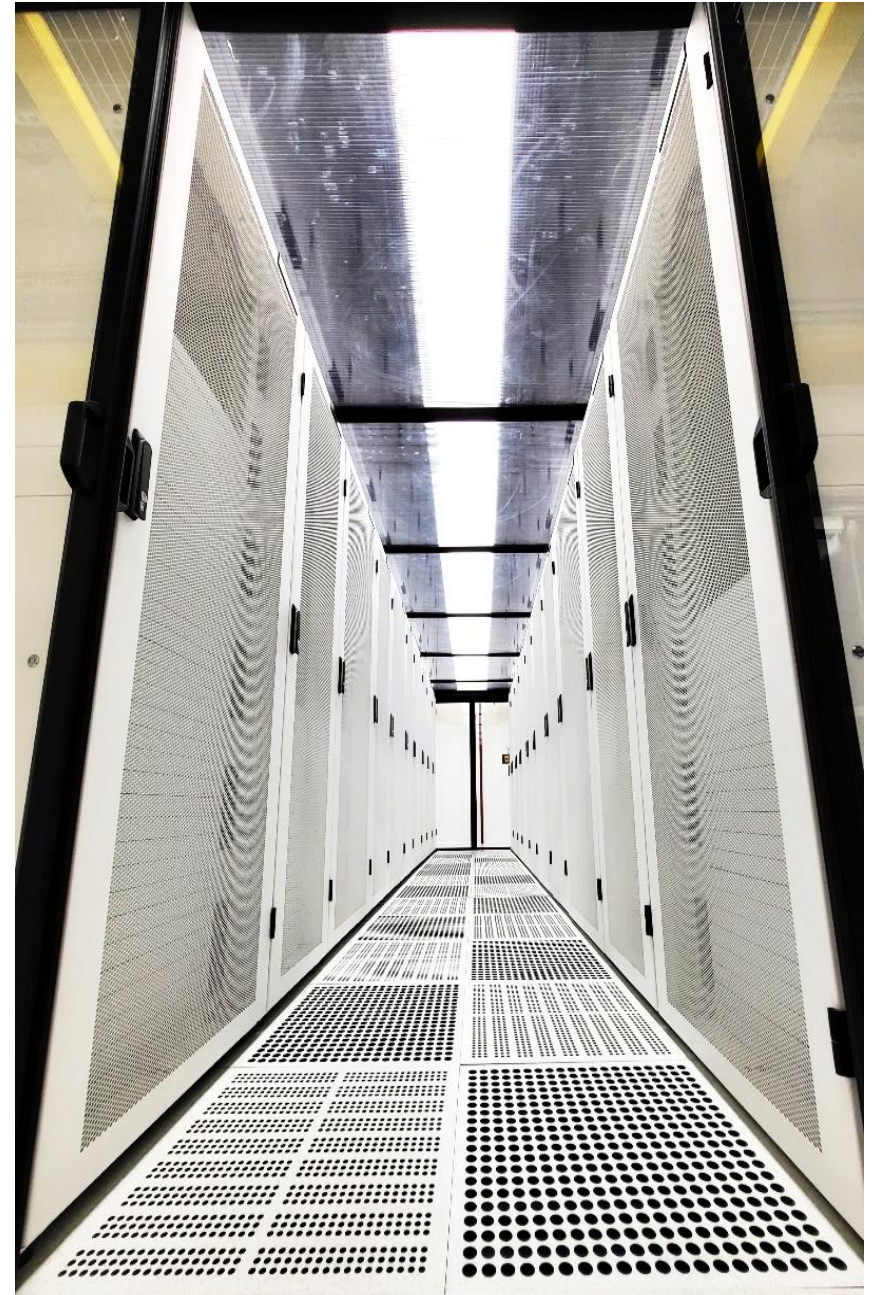


## IT ROOM 1 100% Done

- AC connection 120 /220 V
- DC -48 V connection available
- Temperature and Humidity Control for each Rack
- Preventive Detection of Harmful Particles and Gases
- Fire extinguishing in 5 seconds, Novec 1230 latest generation
- 4 Bottles for Each Room
- Availability Monitoring 24x7
- Private Physical Security
- Strict Facial and Fingerprint Biometric Access Control
- In process ISO 27001 and PCI-DSS

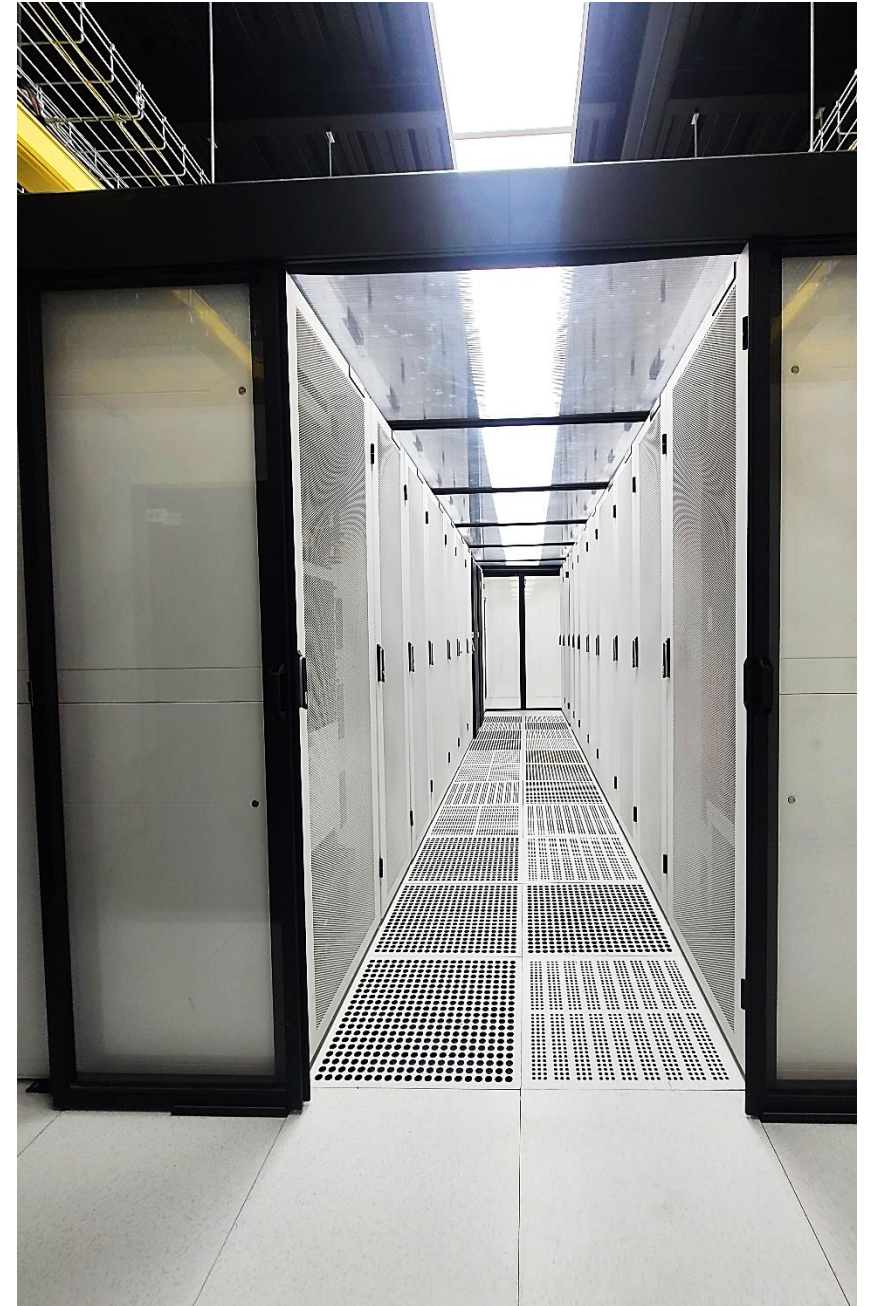


IT Room #1  
100% in  
Operation



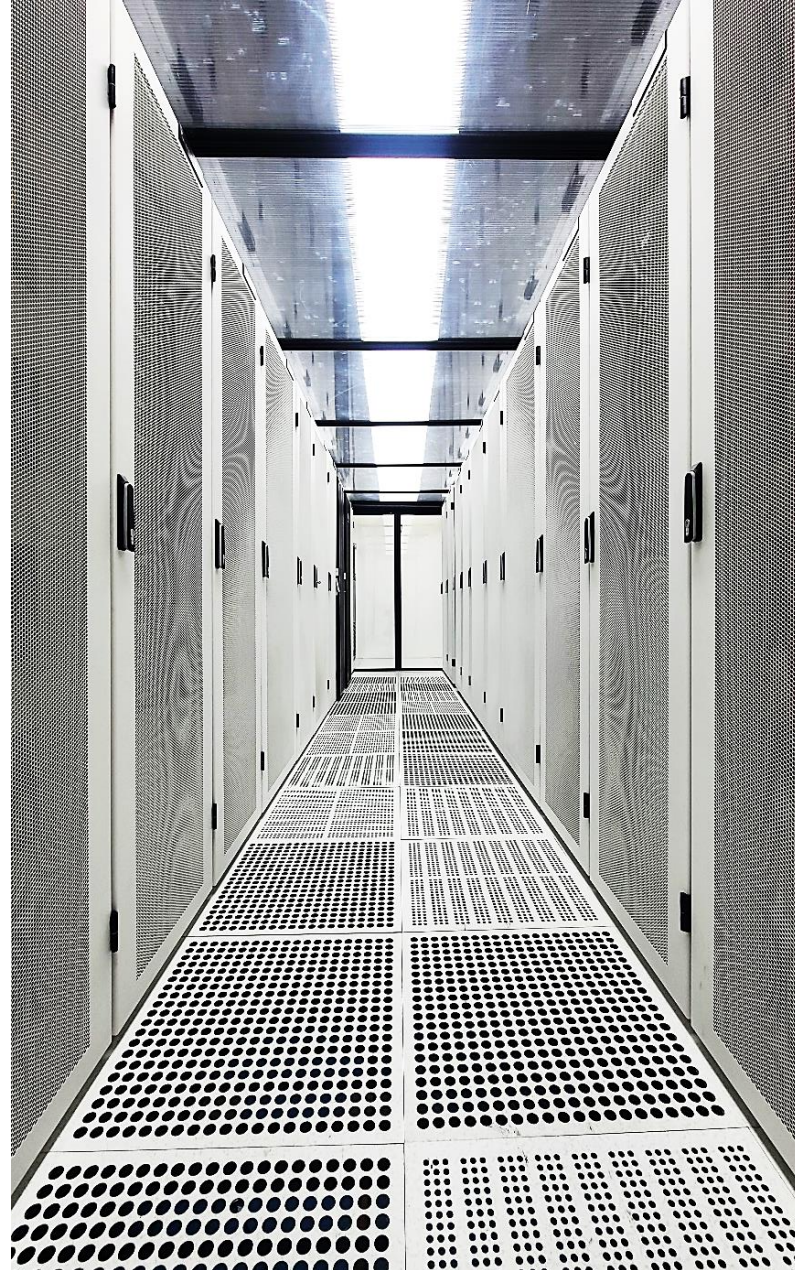


Cold Aisle  
Confined  
Space





Air  
Conditioning  
by Perforated  
Technical Floor  
to Ensure Air  
Flow Precision





Racks 47 UR  
Legrand  
800mm X  
1200mm X  
2307mm

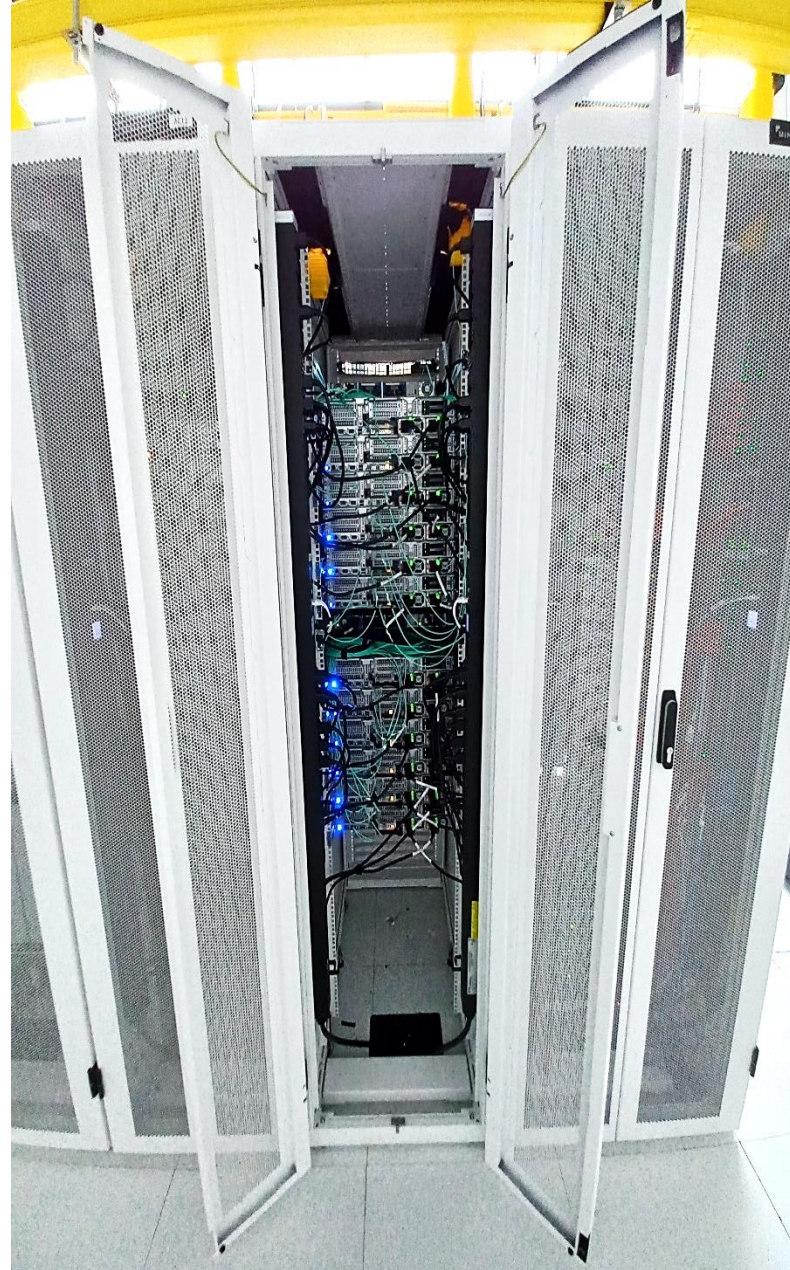
- Front View in Cold Aisle
- Automatic Temperature and Humidity Sensors in Each Rack





Racks de 47  
UR Legrand  
Puerta Frontal  
tipo Malla  
Puerta Trasera  
Doble Hoja

- Back View in Hot Aisle
- Two Legrand A+B PDUs
- 48 x 2 Regulated Sockets
- Double Fiber Optic Access





Legrand  
Managed and  
Redundant  
PDUs with 48  
outlets each  
(C13 – C19)

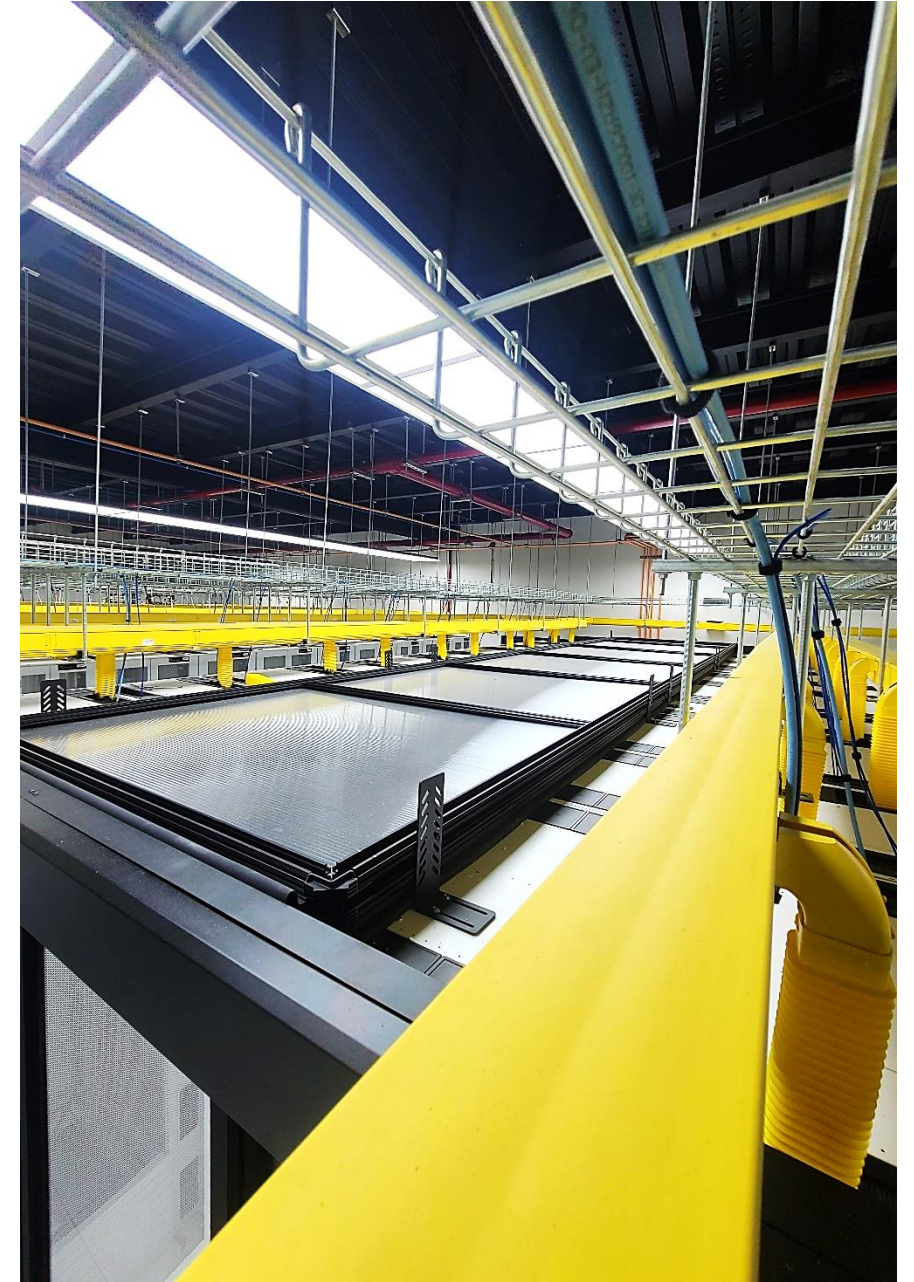
- Each Rack Supports up to 6 PDUs of 48 Outlets





- Hot Hall
- Confined space

Wide Spaces  
that Allow Large  
Equipment to  
Enter





- Gas Predictive System

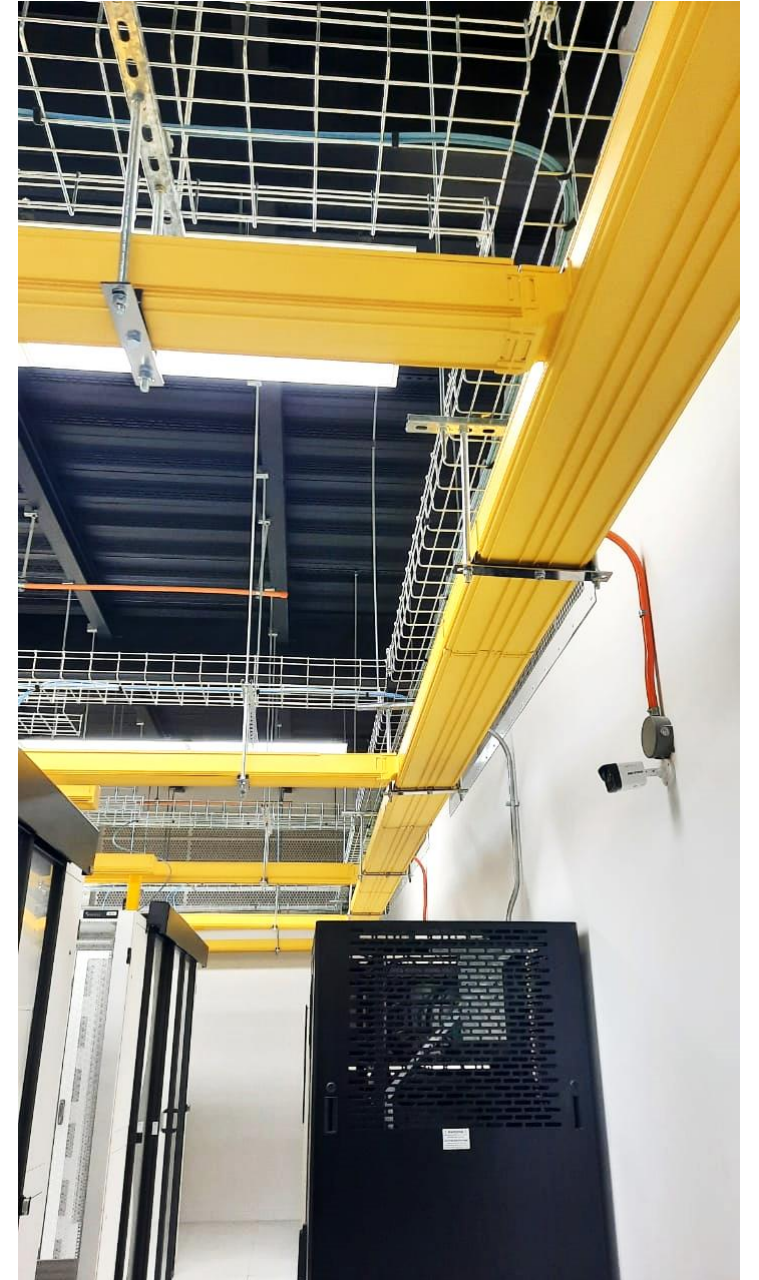
Early Detection  
System for  
Harmful Particles  
and Gases

**VESDA**





Fiber Runner  
with Two  
Run Legs and  
Copper Run  
Ladder





# Health Monitoring





Cross Rooms  
Connection  
Environments  
A and B





Capacity of  
6400 3mm  
Fibers X 2  
Quarts A and  
B



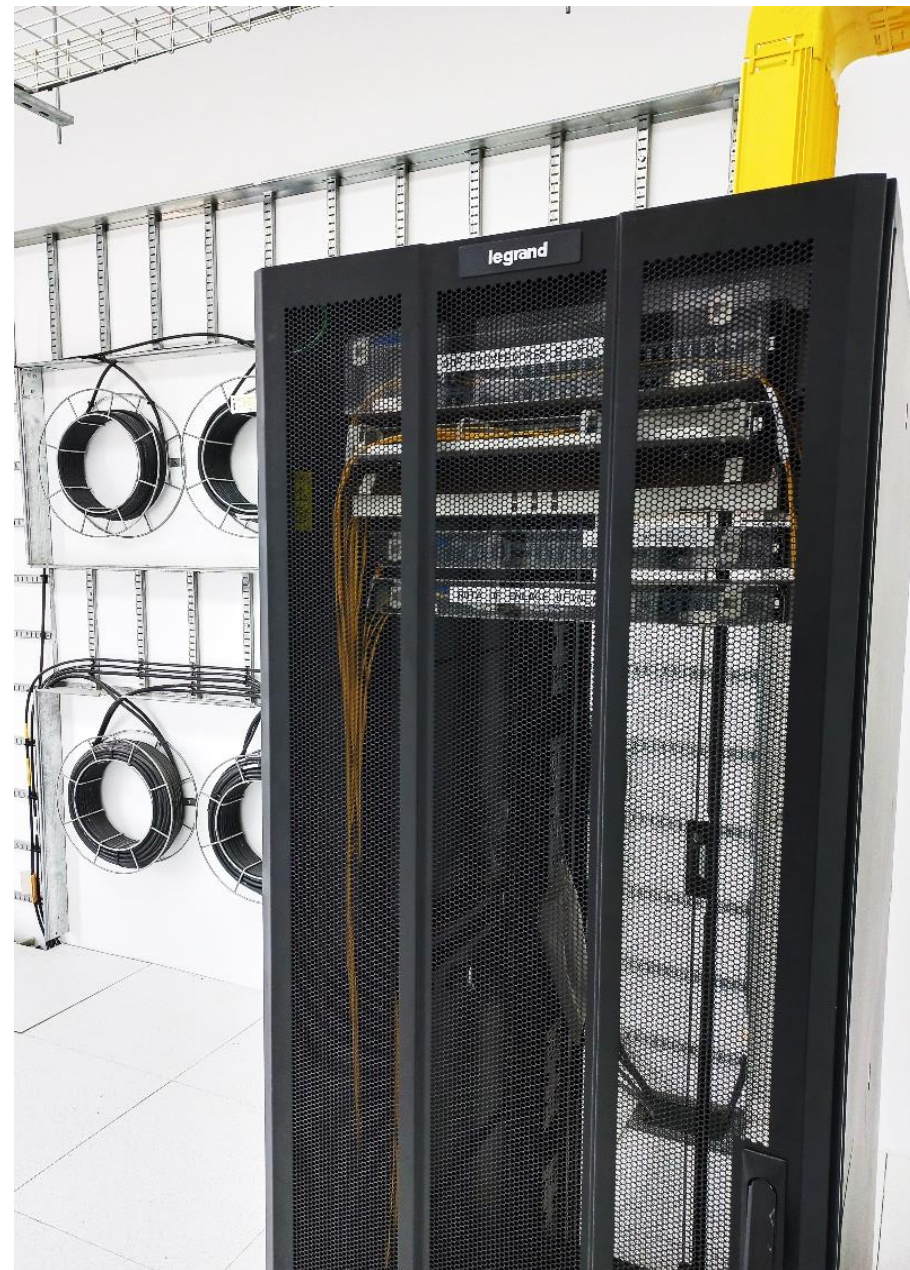
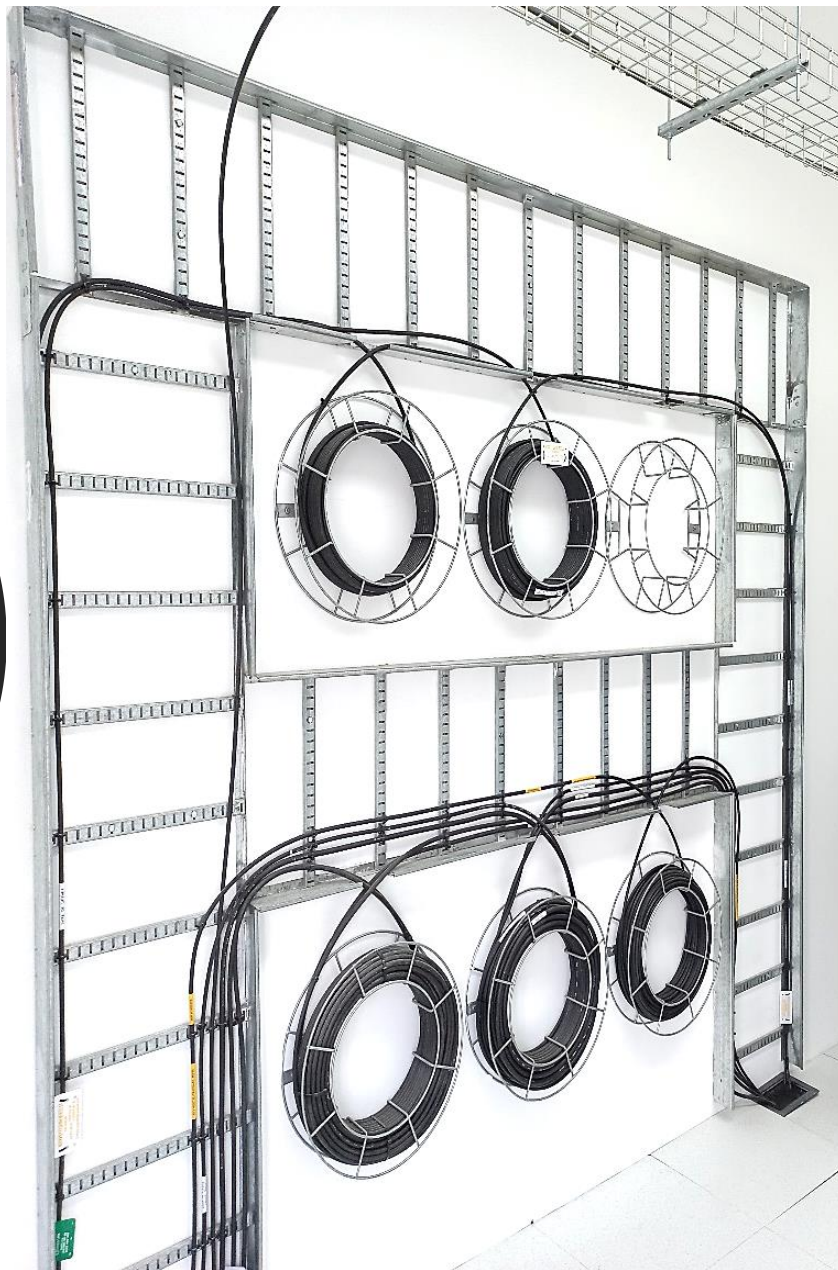


12-Wire Trunk  
Connections  
with High  
Density Hot  
Plug MTP /  
MPO





Supplier  
Rooms with  
1Km  
Underground  
Fiber Access in  
Environments  
A and B



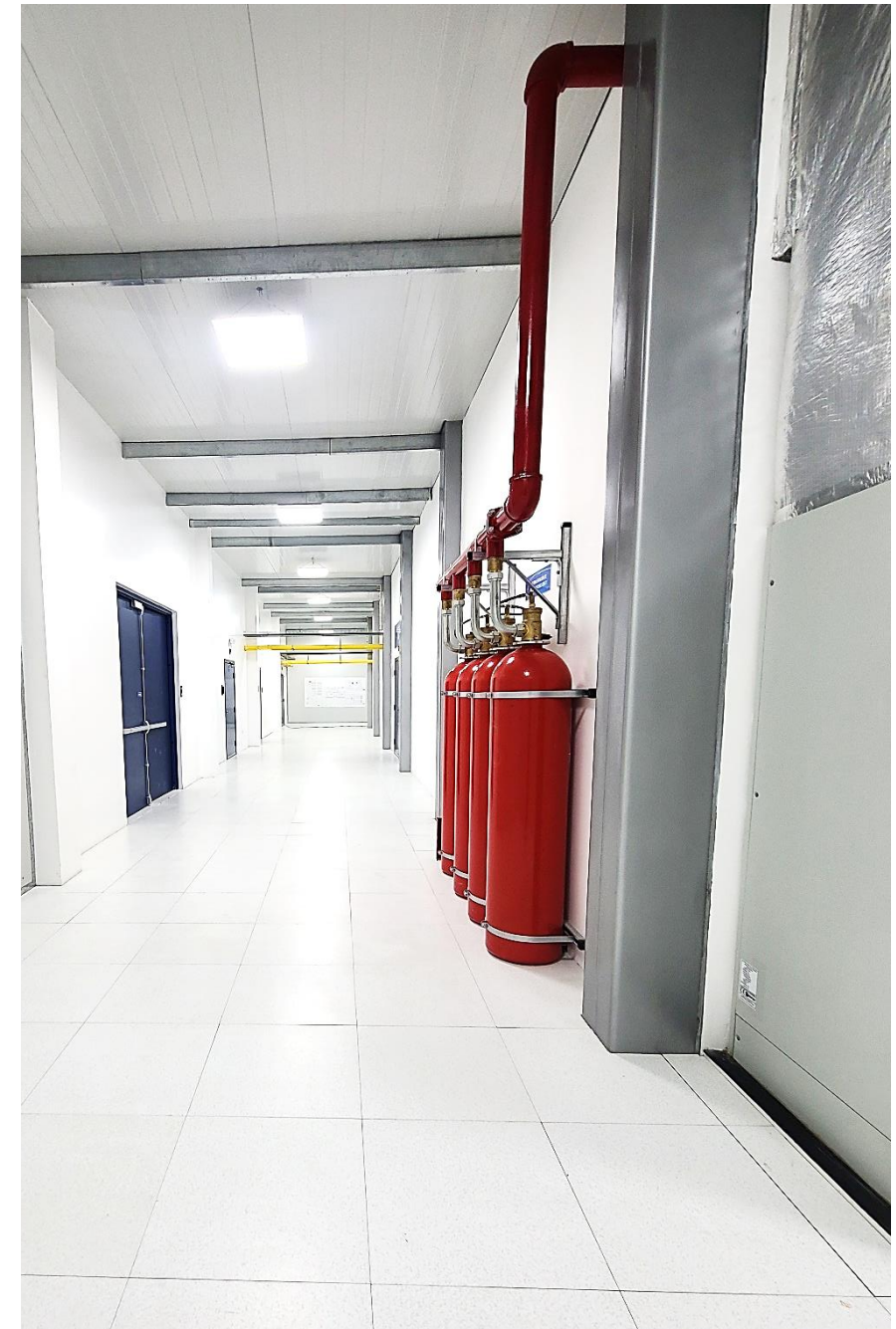


IT Room 2 30%  
Total Progress  
100% Civil  
Works finished





Fire Suppression  
Novec 1230 3rd  
Generation





Air  
conditioning  
10 teams of  
103 Kw in  
environments  
A and B





Air  
Conditioning  
Protected  
Equipment in  
Environments  
A and B



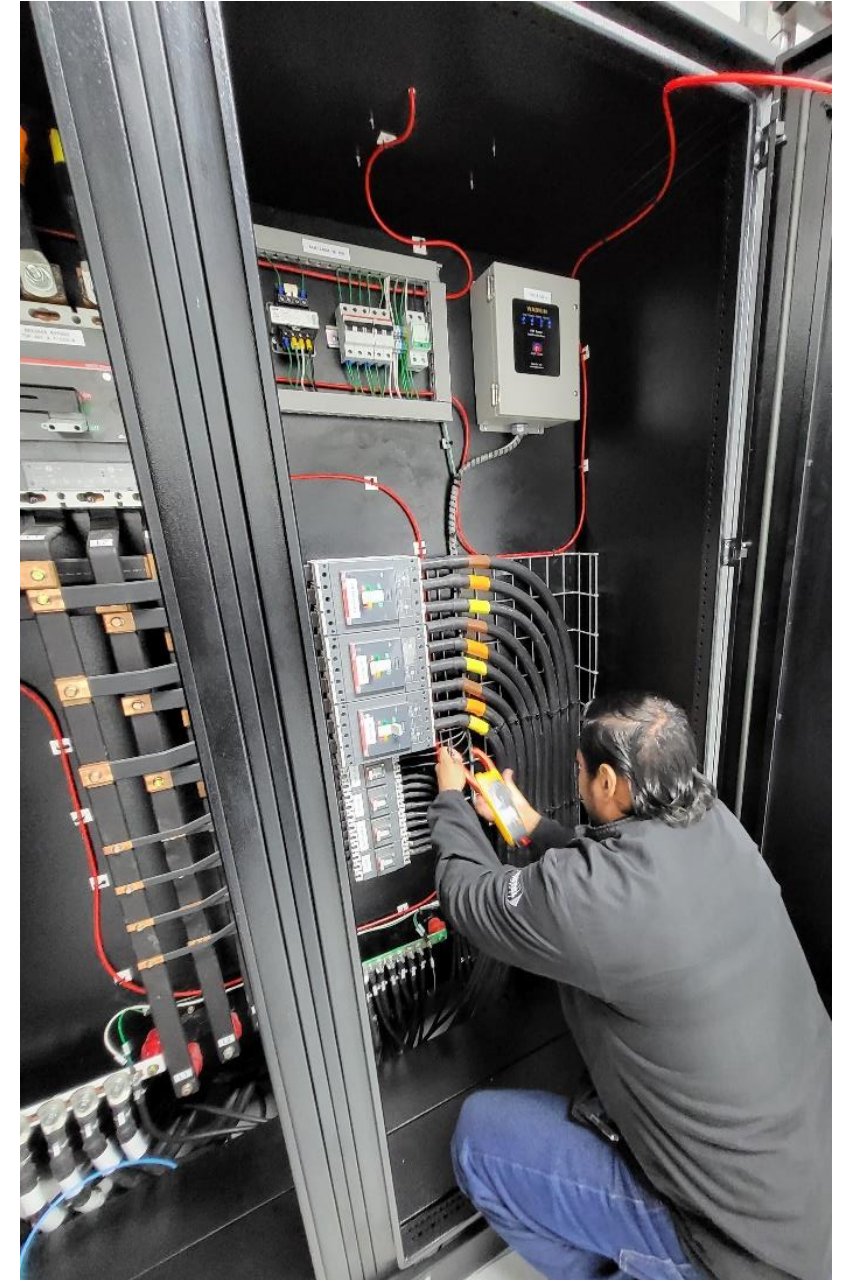


Power  
Rooms ABB  
Panels in  
Environment  
s A and B





Monitorable ABB  
Equipment in  
Environments A  
and B



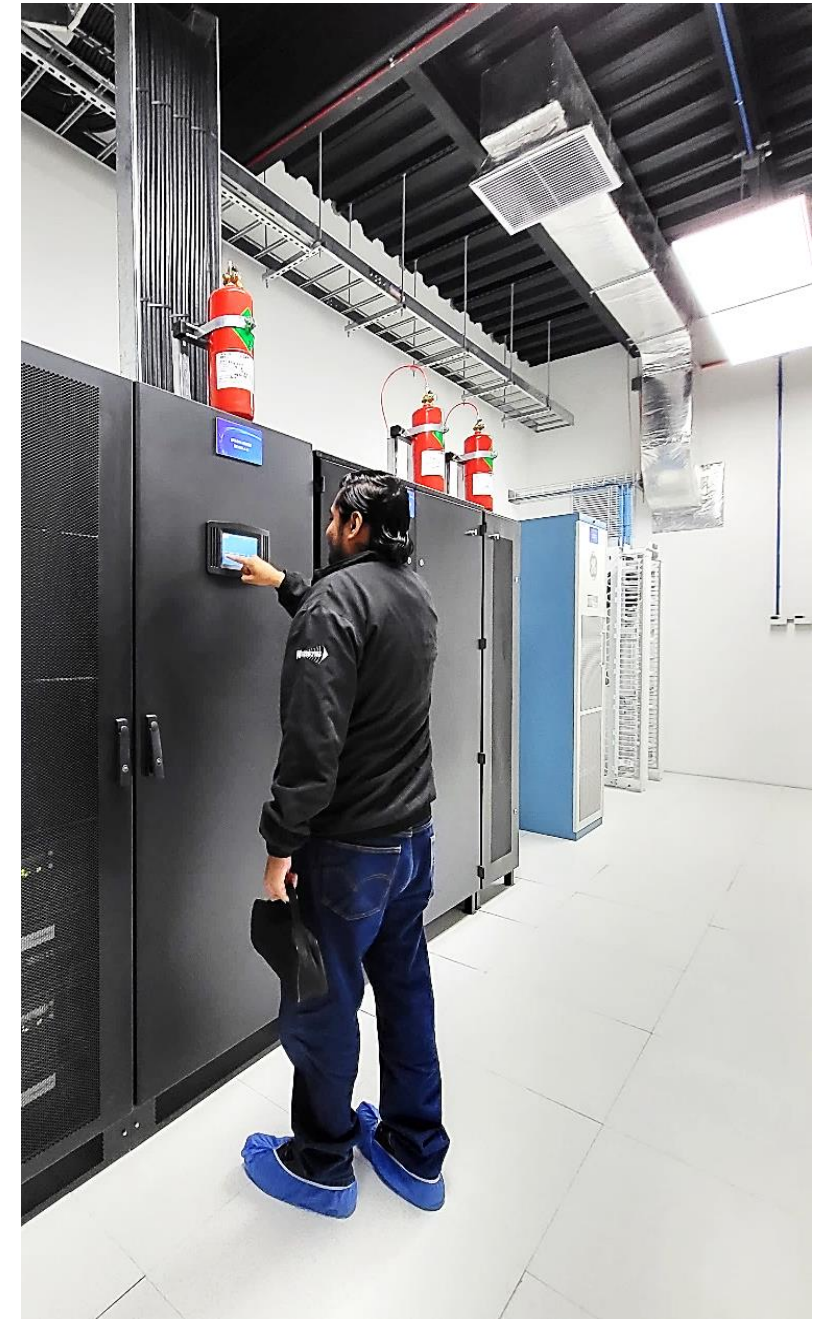


2 x 500 KVA  
ABB UPS  
Rooms and  
1000 Amp  
Rectifiers in  
Environments  
A and B



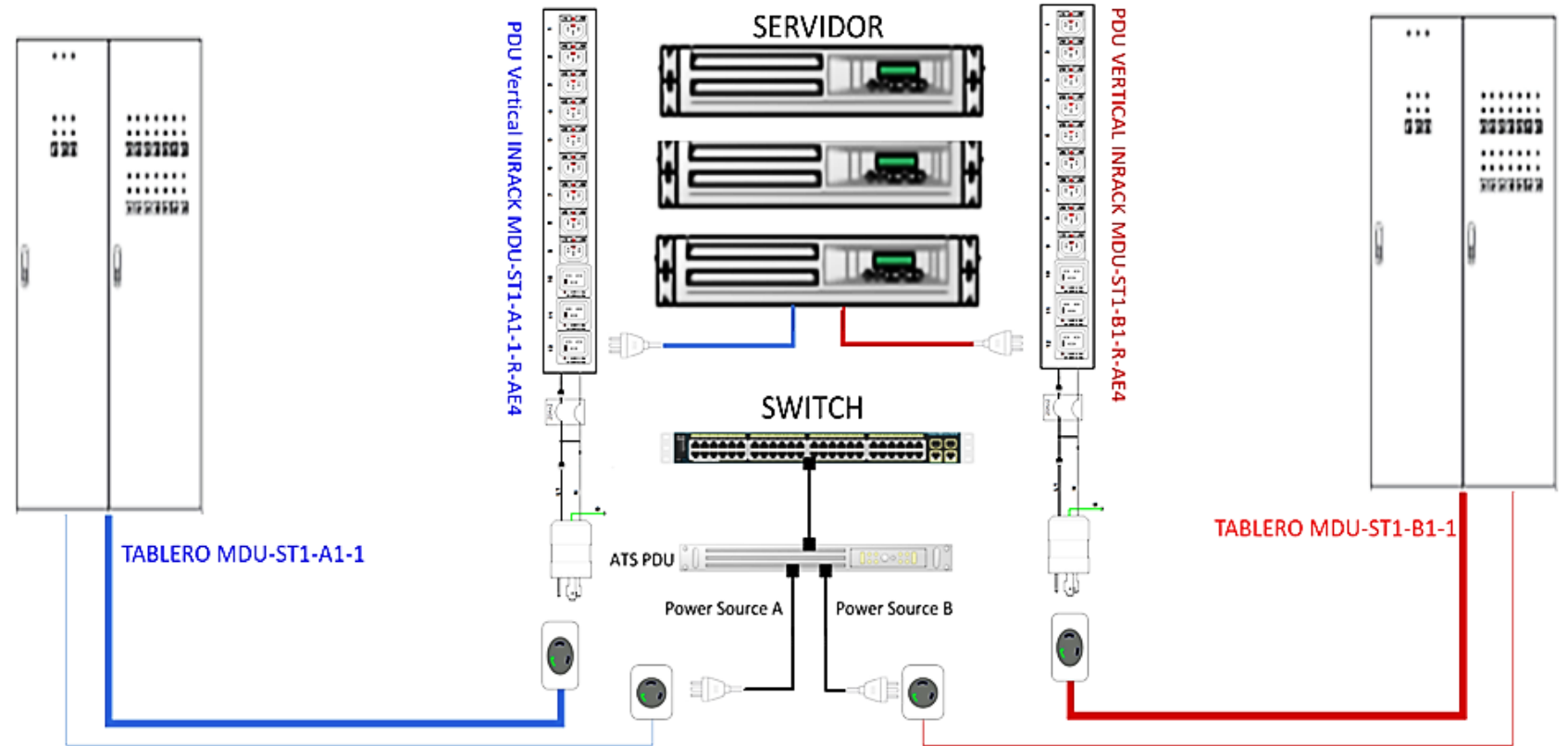


ABB Scalable,  
Manageable and  
Redundant  
Equipment





## Inrack / Power Implementation Schematic



SERVIDOR DE DOBLE FUENTE Y SWITCH DE 1 FUENTE



Generators of  
807 KVA  
Himoinsa, with  
Synchronism



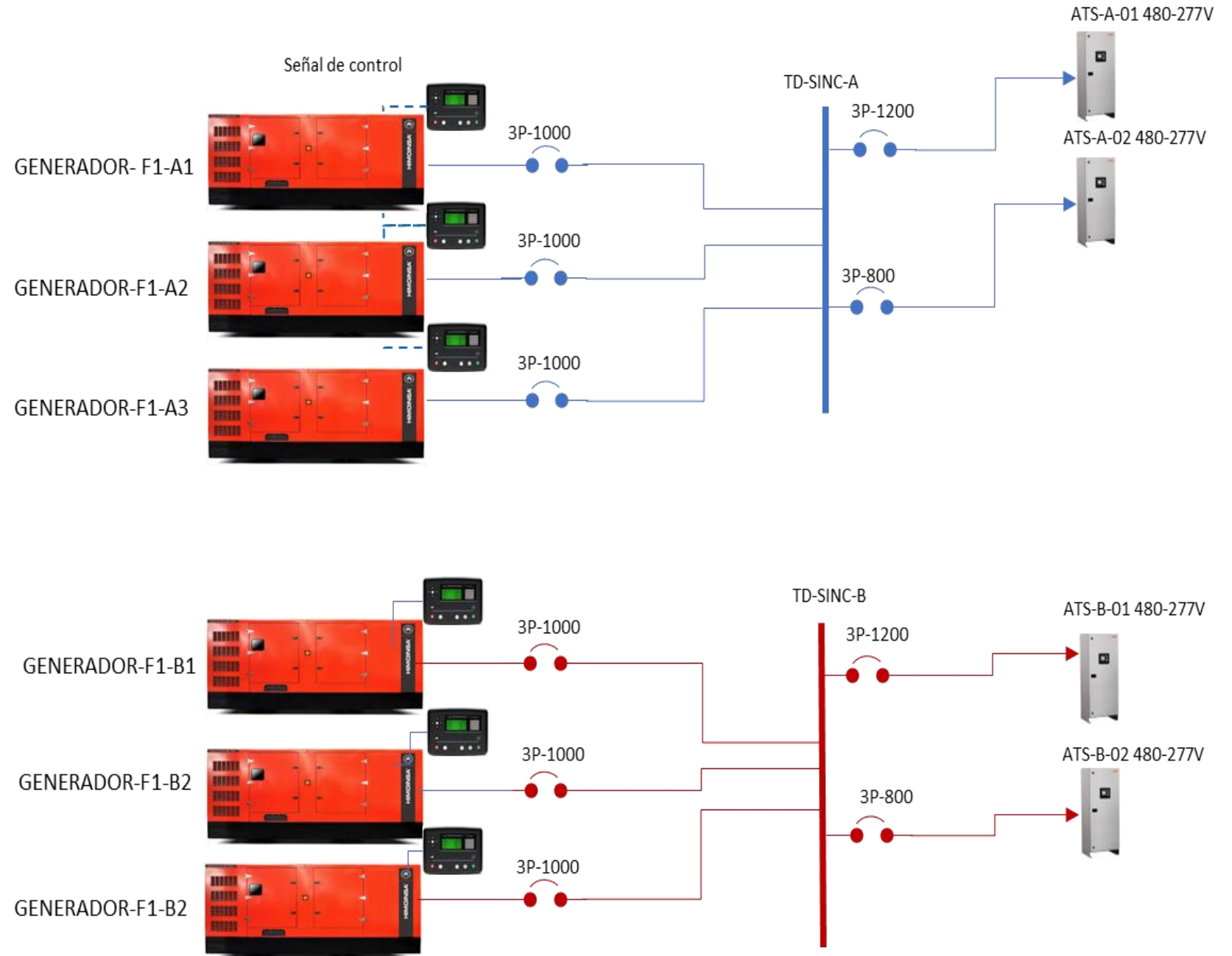


Total  
Autonomy  
with High  
Power  
Generators



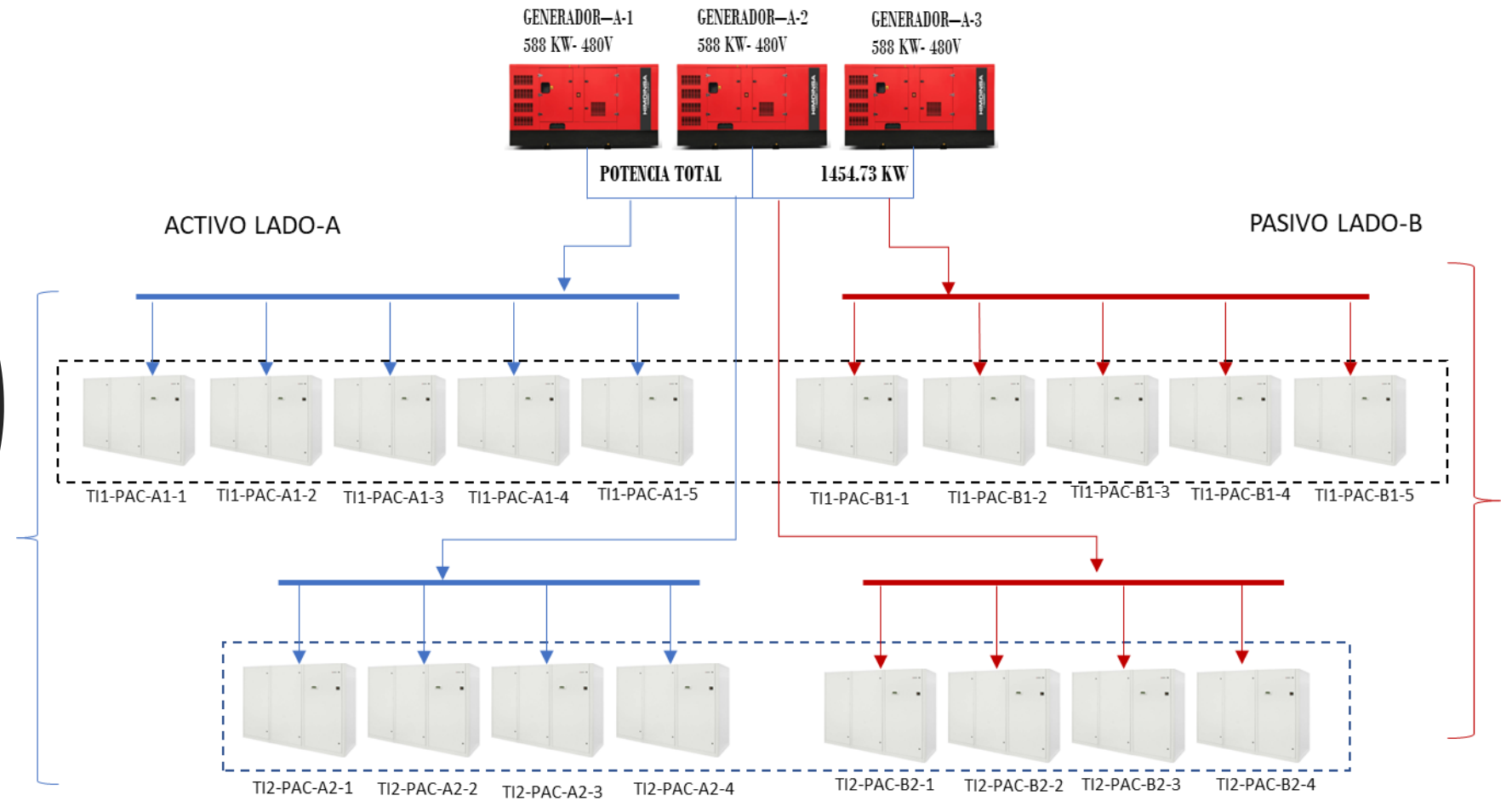


# Total Autonomy with High Power Generators





## Active and Passive Operation Scheme





Electrical Sub  
Station with a  
capacity of 7,500  
KVA

- Own Electrical Sub Station with large reserve capacity for customer growth.





Transformers  
with  
 $2 \times 2.5 \text{ MW}$





Electrical Panel  
Rooms in  
Environments A  
and B





Equipment  
Preparation  
Room and  
Coworking





## Data Center Offices





## Data Center Meetings







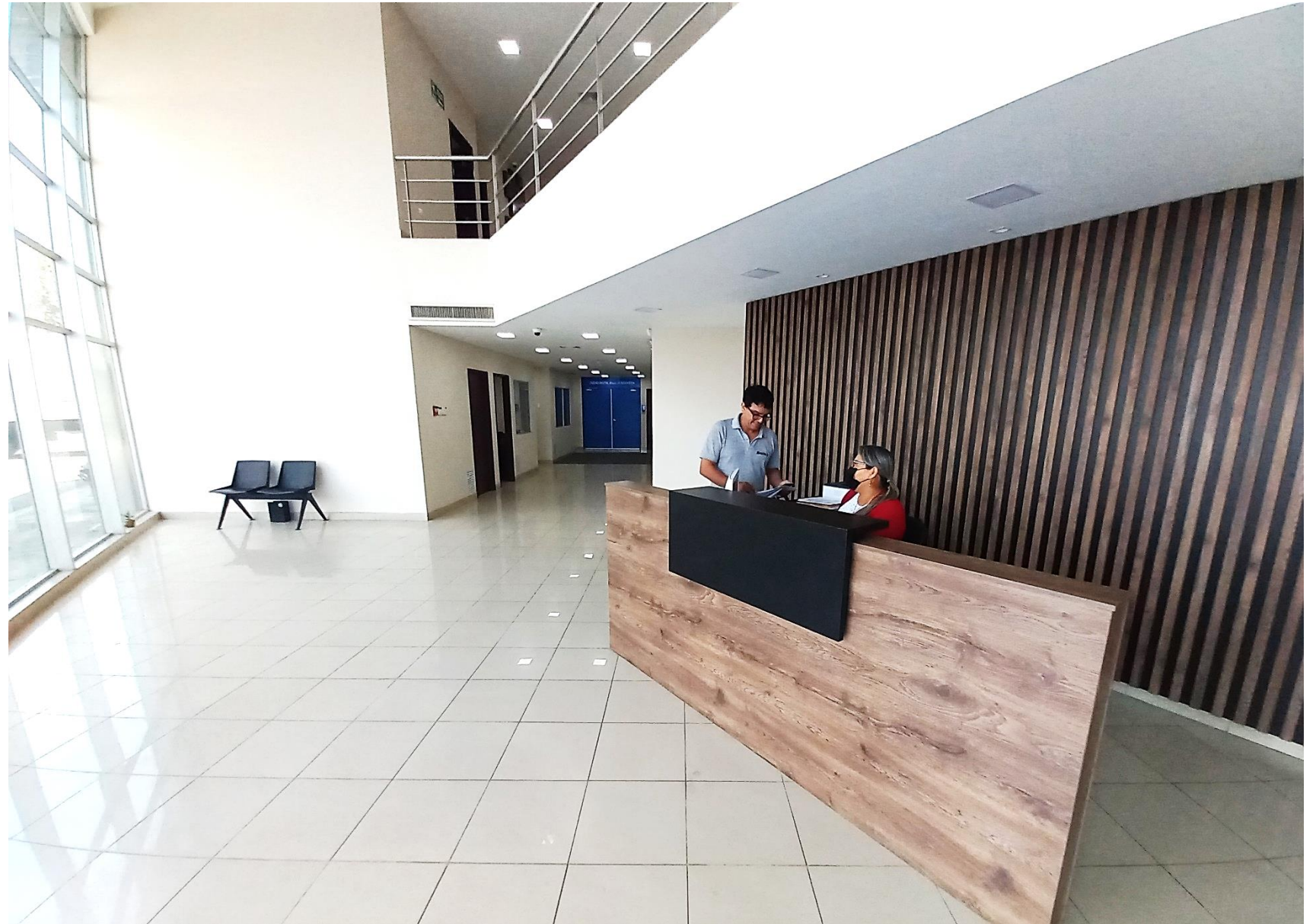
# Storage warehouse

- Control, Inventory and Monitoring of equipment, from the moment they enter the organization until the delivery to the internal user or end customer





# Commercial Visit Income





Commercial  
Lock Entry





Technical  
Lock  
Entrance







## Commercial area parking

- Double parking area for commercial visitors and end customers.
- Constant communication with administration, reception and private security company.







# Technical area parking

- Ample parking spaces, entry of equipment and stay of the client's technical personnel.
- Access controls by communication of 3 checkpoints and internal armed mobilization.







# Physical and Logical Security

- Private Company with 24x7x365 Service Points, Triple security control, reports and strict controls on entering the Data center and offices.
- Restricted access control with facial recognition biometrics to IT rooms and fingerprint access to each data center area.
- The control begins from the entrance of the vehicle to its exit.





# NOC

- 1st Level support with national coverage.
- Focused on quality customer service.
- First attention filter and personalized solution.
- Scaling with second level areas: Commercial, VIP Support, Climate and Force, GIS, SOC, Networking, OTM, Data Center.





# Level 2 Support

- VIP engineers. More than a dozen certified engineers on CISCO, Huawei platforms, with attention to mass attention problems.
- Pre-sale attention and second level support to customer accounts, Data Center Support.





# GIS and SOC

- GIS: Administration of new last miles and relocations, coordination of crew work nationwide
- SOC: LATAM Cyber Security Office, attention to projects, implementations and support of logical security solutions.

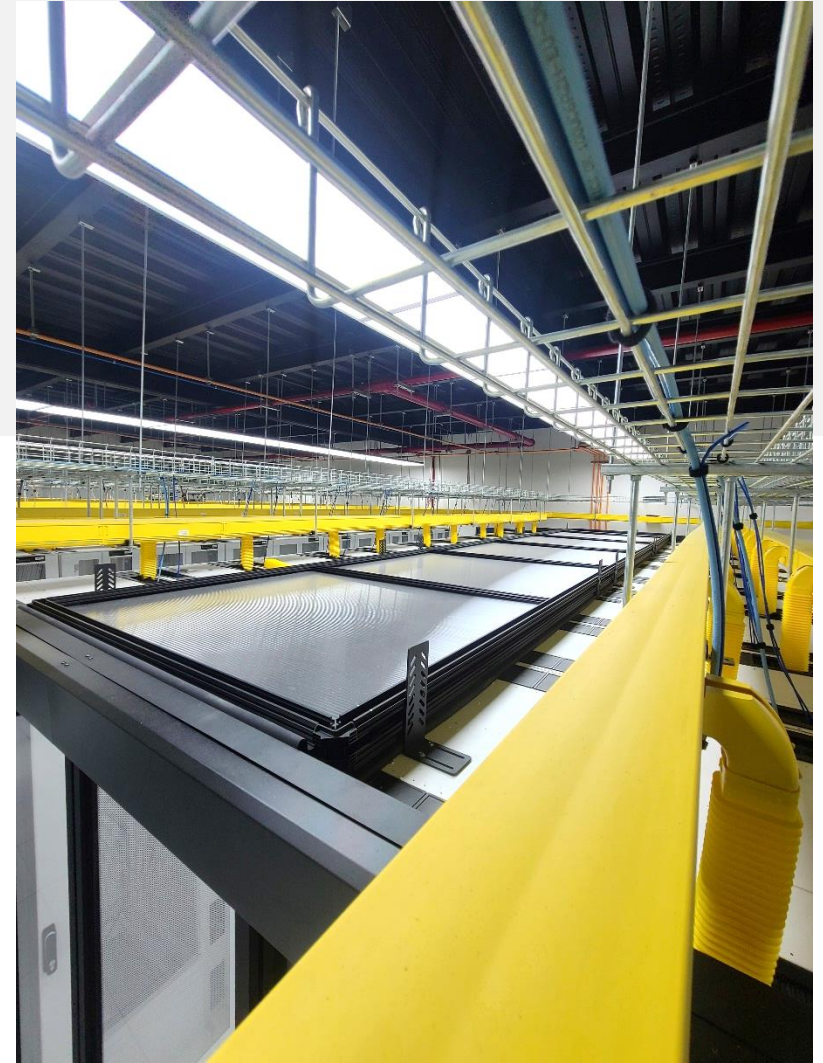






# Networking OTN

- 3rd level support.
- Administration of DNS Applications, CGNAT, CDNs, Routing, IP Networks, Transmission Networks, New projects and specialized support.





# Electricity and air conditioning

- Data center infrastructure support and Node support coordination
- Specialists in Climate and Force.







**OUR DATA CENTER IS UNIQUE TO HELP YOU  
IN YOUR DIGITAL GROWTH.**



T: +593 4-600-8192



M: [datacenter.ecuador@ufinet.com](mailto:datacenter.ecuador@ufinet.com)



W: [www.ufinet.com/colocation](http://www.ufinet.com/colocation)

